

**INTERMEDIATE BEARINGS IHB**

**Intermediate Bearings for horizontal shafted screw conveyors**

**MACHINE DESCRIPTION**

**R.E.M.** Intermediate Hanger Bearings **IHB** are top of the range and the only in the market capable to withstand torques **up to 150,000 Nm (1,327,000 in.lb.)**. **R.E.M.** intermediate hanger bearings have been successfully installed at the Singapore Changi **WWTP**, the biggest **WWTP** in the world. The particular configuration of the plant and the high performance requirements have driven the engineers toward bearings designed to last a Century (100 years).

**WORKING LOGIC FOR STORAGE INTERMEDIATE HANGER BEARING IHB**

The intermediate hanger bearings are **mechanical components** used to connect to separate sections of spirals and support the spiral itself. The hanger bearing is complete with a supporting channel, as shown in the picture, bolted to the trough through the slots on the channel itself. The hanger bearing is kept lubricated by the automatic greasing system installed on the top side of the channel. Supports are made of the parts listed below. In the following pages are shown the dimensions and the main components of the intermediate hanger bearings.

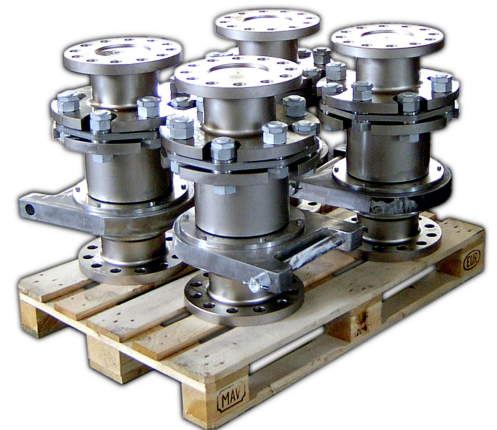
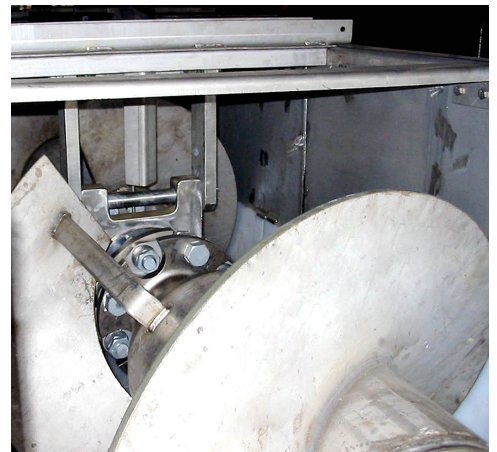
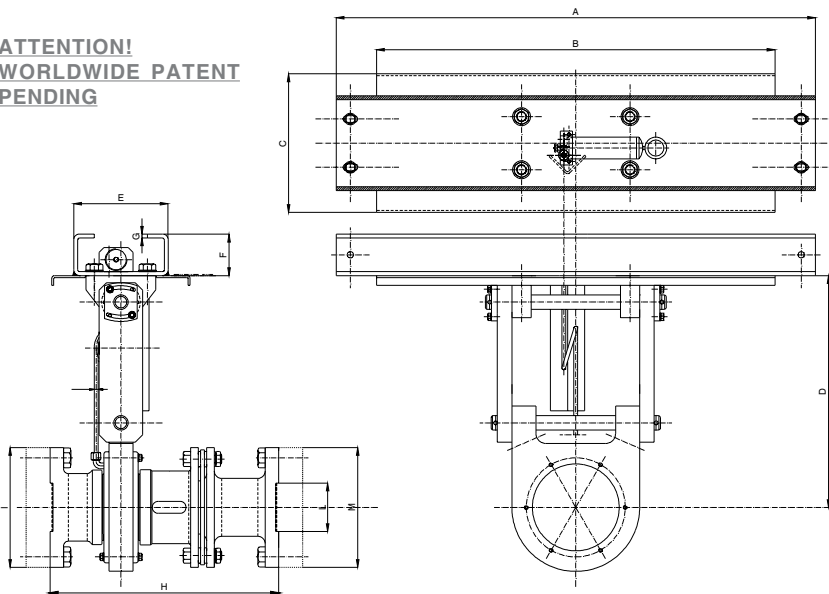
**MAIN FEATURES FOR INTERMEDIATE HANGER BEARING IHB**

1. Main bearing enclosed in a grease chamber, sealed with mechanical seals.
2. Discs coupling made of high strength stainless steel whose corrosion resistance is better than AISI316.
3. Double hinged connection to allow axial movements without any torque transmitted to the bearing or the main support frame.
4. AISI316 Automatic greasing system.
5. No plastic inserts used in any component.
6. Adjustable height with eccentric insert (optional).

**STANDARD DIMENSIONAL DATA FOR INTERMEDIATE HANGER BEARING IHB**

**Materials of Construction:** Fabricated parts Stainless Steel AISI304 / Stainless Steel AISI316

**ATTENTION!**  
**WORLDWIDE PATENT**  
**PENDING**



IHB MODELS	A - mm	B - mm	C - mm	D - mm	E - mm	F - mm	G - mm	H - mm	ØI - mm	ØL - mm	M - mm	SHAFT CORE DIAMETER - mm
IHB100	AS PER CUSTOMER REQUEST				196	86	8	474	248	100	248	100
IHB120	AS PER CUSTOMER REQUEST				196	86	8	529	248	100	248	120
IHB180	AS PER CUSTOMER REQUEST				196	62	8	640	328	160	328	180