

## REMSCREEN RS3

### Internally fed drum Screens for separating solids/liquids

#### MACHINE DESCRIPTION

R.E.M. range of internally fed drum screens features a broad selection where units for every application can be found. **RS3** is a simple and effective unit where the core is represented by a rotating cylinder made of wedge-wire or perforated plate with an internal screw rotating with the drum which conveys the screenings toward the outlet.



The range includes several diameters and lengths to accommodate a large variety of applications and needs. The filtering aperture is selected based upon the waste to be treated and the level of screening required.

Aperture ranges between **500 microns (wedge-wire)** and **6 mm perforated**. A set of spraying high impact nozzles are fitted for cleaning purposes. On request it is possible to install a stationary brush on the outer side of the drum. **RS3** are successfully installed in many applications like:

- **ABATTOIRS.**
- **TANNING.**
- **MBR FOR MEMBRANE PROTECTION.**
- **MUNICIPAL WORKS.**
- **INDUSTRIAL APPLICATIONS.**

#### WORKING LOGIC FOR ROTATING FINE SCREENS RS3

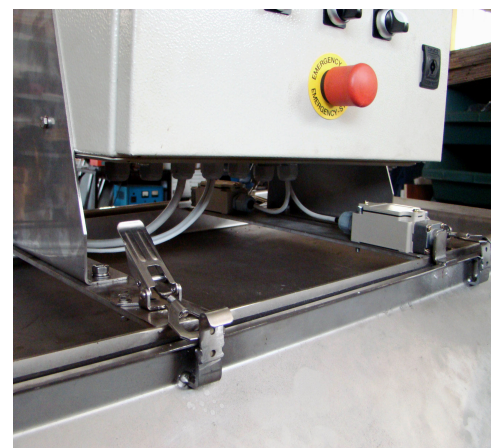
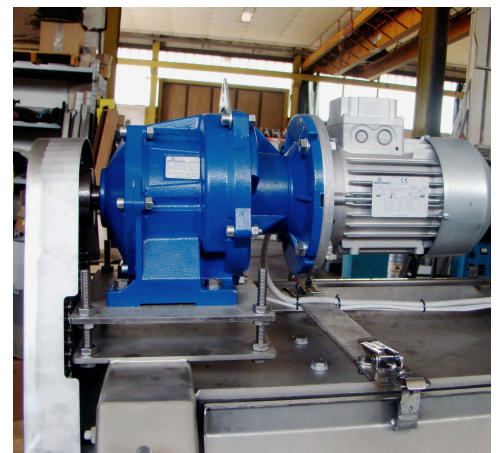
The **RS3** is a unit suitable for screenings of difficult waste streams. It is based on the movement of a rotating cylinder fitted with an internal screw for screenings conveying. The wastewater enters the unit through the inlet flange and is distributed through the weir.

The rotation of the drum assures the continuous cleaning and the screw allows the screening to move toward the outlet while sliding along the cylinder inner surface.

The filtered water is collected by the underneath hopper and drained through the outlet port. The external spraying system assures the cleaning and efficiency of the unit.

#### MAIN FEATURES FOR ROTATING FINE SCREENS RS3

1. Perforated or wedge screen of various sizes.
2. The machine is self-cleaning.
3. The wide range available makes it possible to choose the right version to suit the application requirements.
4. The stainless steel structure allows the use of the machine for handling acids, basic products and foodstuffs.
5. Entire operation of the machine is handled by the drive units.
6. Installation is easy and rapid.
7. Maintenance operations, if necessary, are very simple.



**APPLICATION ADVANTAGES FOR FILTERING DRUM SCREENS RS3**

The following details, for purposes of information and reference, provides some information of a standard nature concerning the advantages of applying this model of screen.

1. Screen open area: The open area can be up to 65% (according to the aperture).
2. Solids separating capacity: It is able to reach a percentage of solid/liquid separation greater than 70%.
3. Headloss: Minimum headloss thanks to the rotating drum.
4. Construction material: The RS3 screens are made entirely of corrosion-resistant stainless steel.

**STANDARD DIMENSIONAL DATA FOR ROTATING FINE SCREENS RS3**

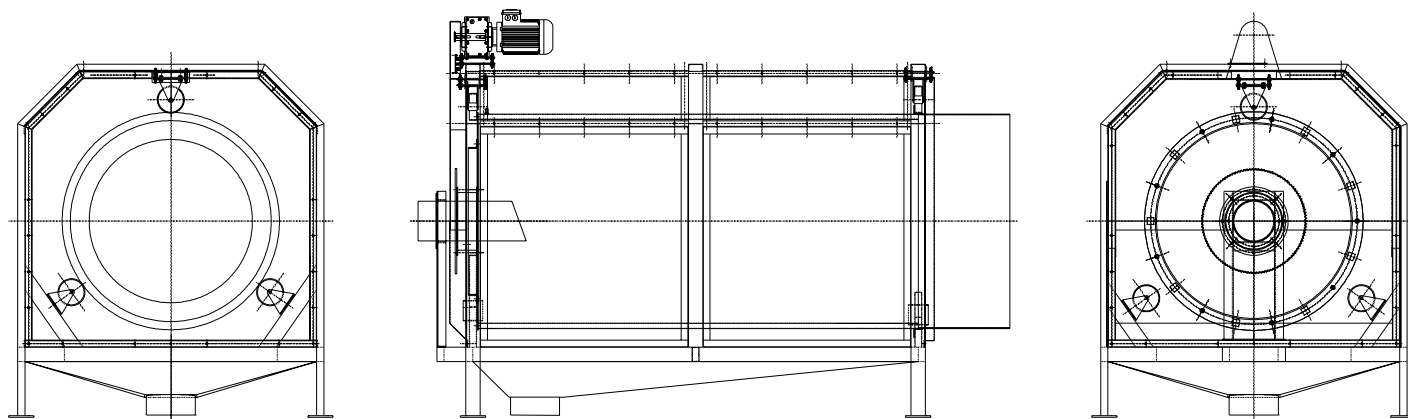
Here we provide some information about technical nature for this type of screens.

RS3 MODELS	DRUM DIAMETER - Ø mm	DRUM LENGTH - mm	INLET DN - mm	OUTLET DN - mm	CAPACITY l/s - WEDGE WIRE 0.5	CAPACITY l/s - WEDGE WIRE 1	CAPACITY l/s - WEDGE WIRE 2
RS3-600/6	600	600	100	200	15	17.5	19
RS3-600/10	600	1000	100	200	22	26	28
RS3-600/15	600	1500	100	200	28	34	37
RS3-900/10	900	1000	150	250	36	44	47
RS3-900/15	900	1500	150	250	58	73	80
RS3-900/20	900	2000	150	250	75	90	98
RS3-900/25	900	2500	150	250	105	130	150
RS3-1200/15	1200	1500	200	300	95	120	135
RS3-1200/20	1200	2000	200	300	110	135	160
RS3-1200/25	1200	2500	200	300	150	185	210
RS3-1500/15	1500	1500	250	350	140	160	175
RS3-1500/20	1500	2000	250	350	205	250	280
RS3-1500/25	1500	2500	250	350	300	350	390
RS3-1500/30	1500	3000	250	350	335	390	435
RS3-2000/30	2000	3000	300	400	520	590	650

**Materials of Construction:**

Fabricated parts: \*Stainless Steel AISI304 / \*Stainless Steel AISI316

Rotary screen: \*Stainless Steel AISI304 / \*Stainless Steel AISI316



n.b.: the manufacturer may modify some dimensions or sizes without prior information